

# NOTICE OF MEETING

---

A BOARD OF DIRECTORS MEETING

OF THE



WILL BE HELD ON

**WEDNESDAY, APRIL 2, 2014**  
**10:00 A.M.**

**AT THE**  
**AT THE OFFICE OF THE AGENCY**  
**6075 KIMBALL AVENUE, BUILDING A**  
**CHINO, CA 91708**



**AGENDA**

**MEETING  
OF THE  
BOARD OF DIRECTORS**

**WEDNESDAY, APRIL 2, 2014  
10:00 A.M.**

**INLAND EMPIRE UTILITIES AGENCY\*  
AGENCY HEADQUARTERS  
6075 KIMBALL AVENUE, BUILDING A  
CHINO, CALIFORNIA 91710**

**CALL TO ORDER  
OF THE INLAND EMPIRE UTILITIES AGENCY BOARD OF DIRECTORS MEETING**

**FLAG SALUTE**

**PUBLIC COMMENT**

Members of the public may address the Board on any item that is within the jurisdiction of the Board; however, no action may be taken on any item not appearing on the agenda unless the action is otherwise authorized by Subdivision (b) of Section 54954.2 of the Government Code. Those persons wishing to address the Board on any matter, whether or not it appears on the agenda, are requested to complete and submit to the Board Secretary a "Request to Speak" form, which are available on the table in the Board Room. Comments will be limited to five minutes per speaker. Thank you.

**ADDITIONS TO THE AGENDA**

In accordance with Section 54954.2 of the Government Code (Brown Act), additions to the agenda require two-thirds vote of the legislative body, or, if less than two-thirds of the members are present, a unanimous vote of those members present, that there is a need to take immediate action and that the need for action came to the attention of the local agency subsequent to the agenda being posted.

**1. INFORMATION ITEM**

**A. CHAIR OF THE METROPOLITAN WATER DISTRICT OF SOUTHERN CALIFORNIA**

**2. DROUGHT PLANNING WORKSHOP**

**3. ADJOURN**

\*A Municipal Water District

In compliance with the Americans with Disabilities Act, if you need special assistance to participate in this meeting, please contact the Board Secretary (909) 993-1736, 48 hours prior to the scheduled meeting so that the Agency can make reasonable arrangements.

Proofed by: CLF

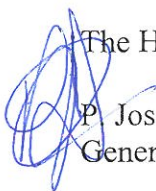
**Declaration of Posting**

I, April Woodruff, Board Secretary of the Inland Empire Utilities Agency\*, A Municipal Water District, hereby certify that a copy of this agenda has been posted by 5:30 p.m. at the Agency's main office, 6075 Kimball Avenue, Building A, Chino, CA on Thursday, March 27, 2014.

for April Woodruff #853  
April Woodruff

INFORMATION  
ITEM

**1A**

Date: April 2, 2014  
To: The Honorable Board of Directors  
From:  P. Joseph Grindstaff  
General Manager  
Subject: Chair of the Metropolitan Water District of Southern California

---

**RECOMMENDATION**

This is an informational item regarding the recent vacancy in the Chair of the Metropolitan Water District of Southern California (MWD) Board.

**BACKGROUND**

With the recent passing of Mr. John W. Foley, the position of Chair will need to be filled. It appears the selection of his replacement will be made in May in order to comply with the MWD administrative code.

**PRIOR BOARD ACTION**

None.

**IMPACT ON BUDGET**

There is no direct impact on the Agency's Fiscal Year 2013/14 budget as a result of this item.

**WORKSHOP  
ITEM**

**2**



*Inland Empire Utilities Agency*

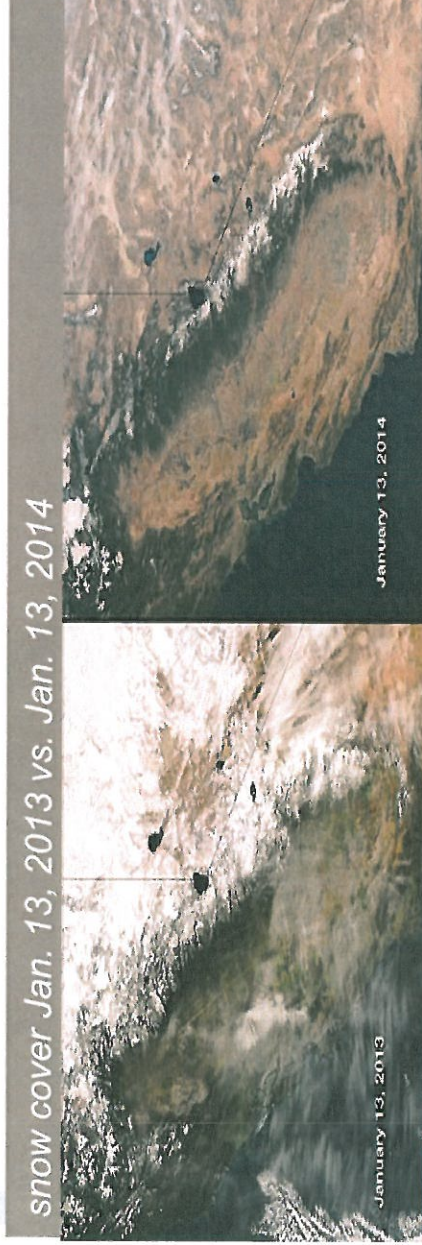
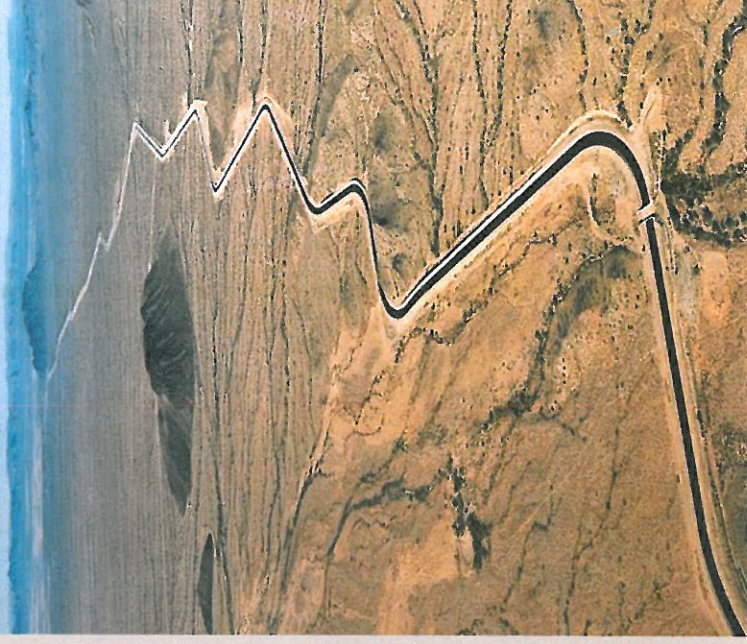
A MUNICIPAL WATER DISTRICT

# Drought Planning Board Workshop

**April 2, 2014**

# Agenda

1. Drought Discussion
2. Local Projects
3. Integrated Resources Plan
4. Next Steps



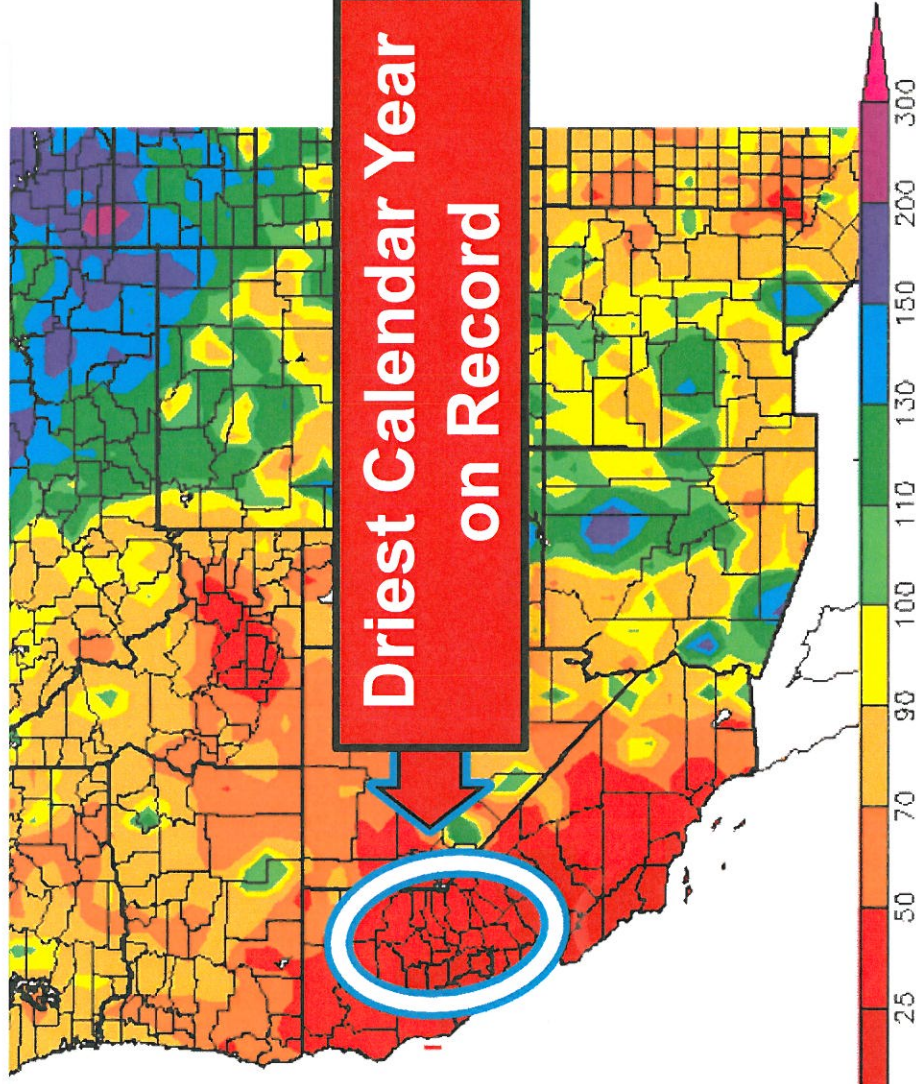


# How Bad Is The Drought?



# 2013 Hydrologic Conditions

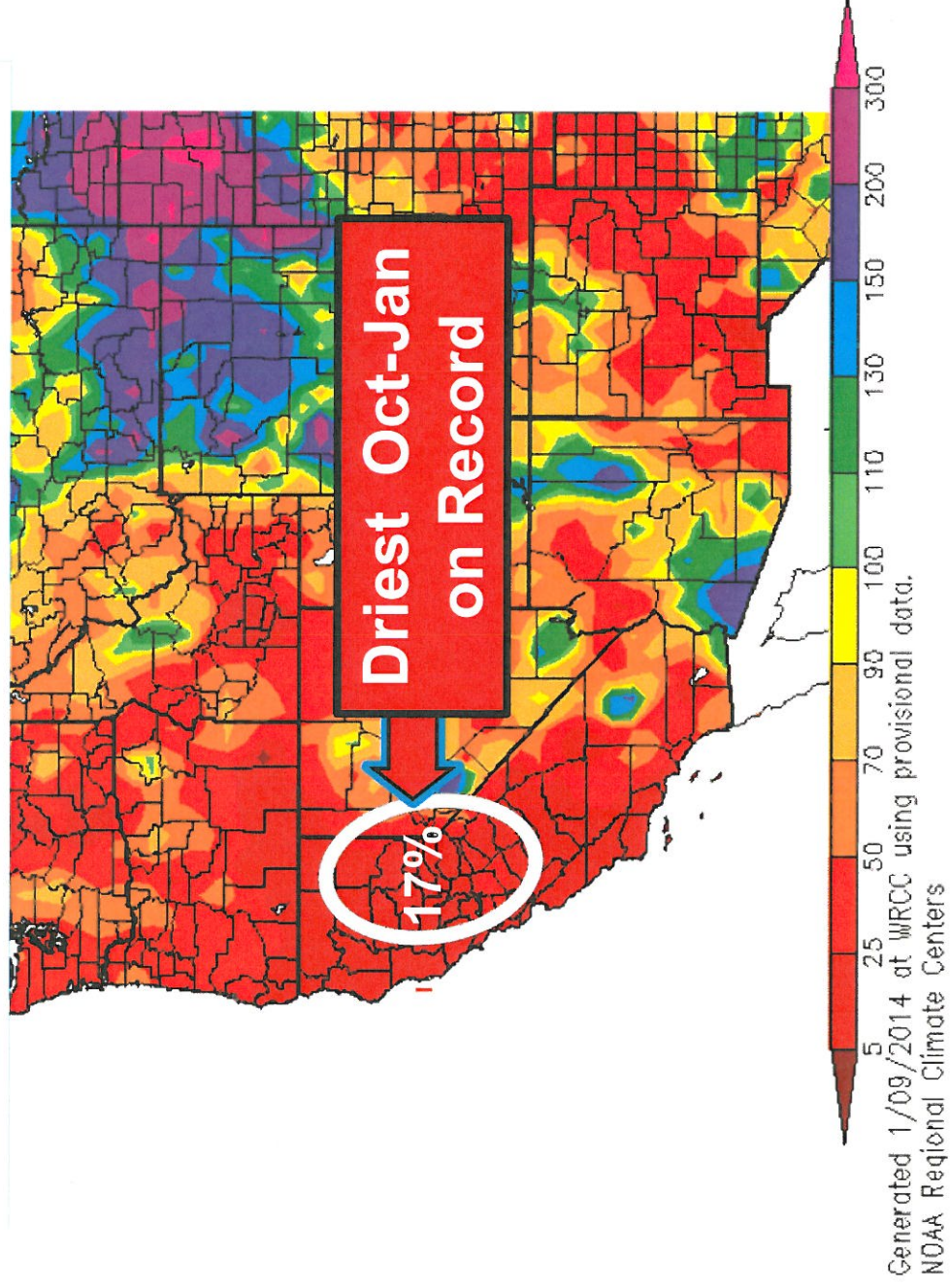
Percent of Average Precipitation (%)  
Calendar Year 2013



Generated 1/09/2014 at WRCC using provisional data.  
NOAA Regional Climate Centers

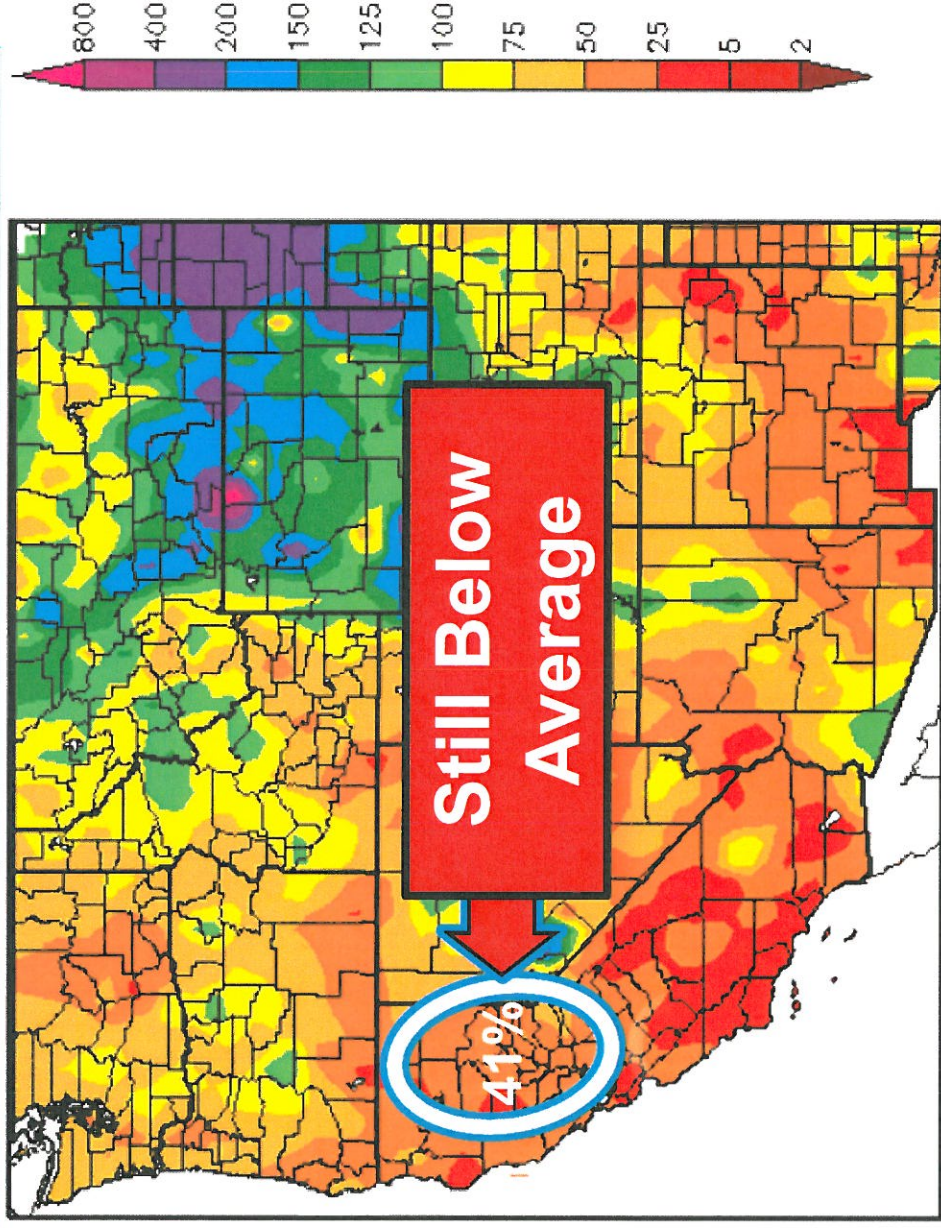
# 2014 Hydrologic Conditions

Percent of Average Precipitation (%)  
Oct 2013 – Jan 2014



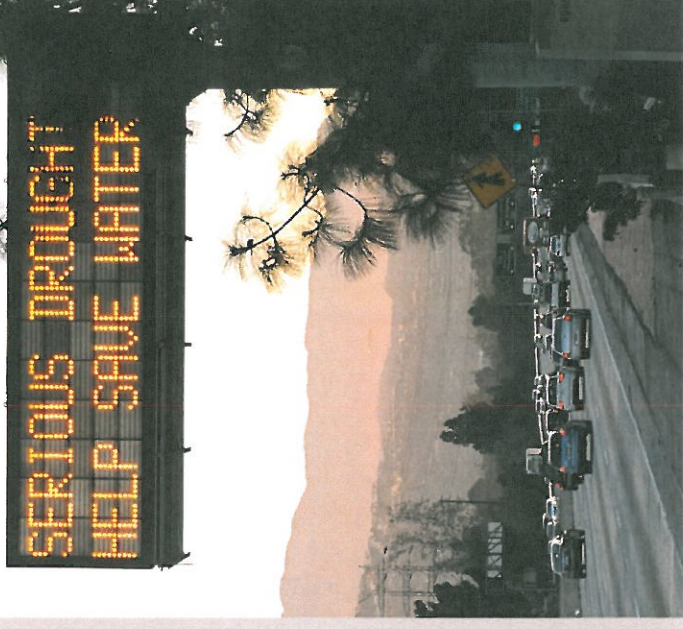
# 2014 Hydrologic Conditions

Percent of Average Precipitation (%)  
Water Year as of Feb 2014

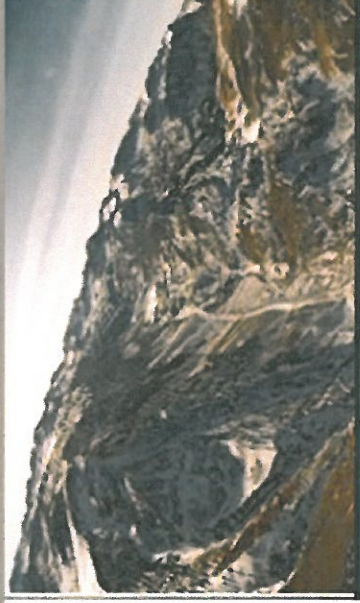


# Gov. Brown Declares Drought Emergency Jan 2014

- Snowpack's water content 23% of normal
- Record lows in California's rivers and reservoirs
- Call for voluntary 20% water conservation
- MWD declares "Water Supply Alert" Feb 2014



Sierra snow cover Jan. 6, 2013 vs. Jan. 8, 2014



# How Does the Drought Impact IEUA?

## NEGATIVE

- × Available Supply
  - MWD adequate carryover storage
  - BUT, how long will drought last?
- × Water Quality
  - Expect increased TDS in State Water Project (SWP)

	SWP TDS	IEUA Water Supply (local +SWP)TDS	Effluent TDS
Current	285	238	499
Potential	450	302	550

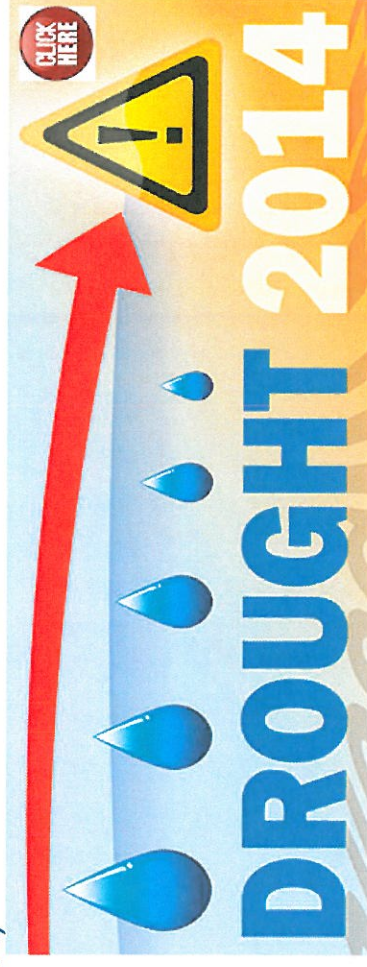
## POSITIVE

- ✓ RW – Increased Recharge
- ✓ Accelerate local reliability projects
- ✓ Pursue funding opportunities
- ✓ Implement Water Use Efficiency Projects



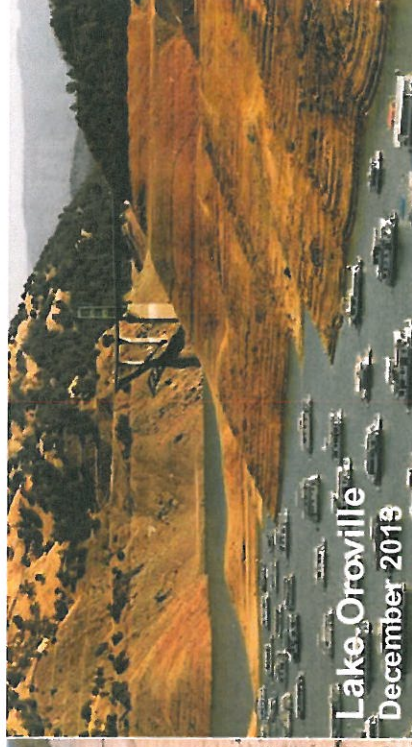
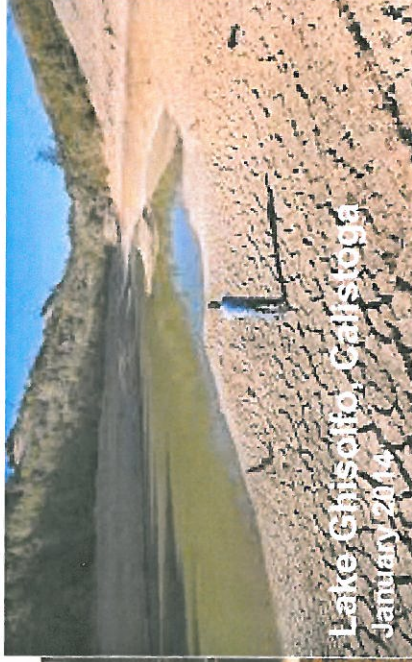
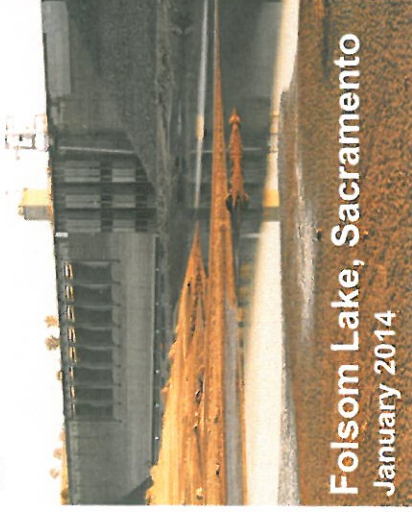
# What IEUA Can Do

- **Support Governor's Declaration**
  - Drought resolution
  - Drought principles
- **Promote Conservation**
- **Coordinated Regional Drought Response**
  - Media
  - Advertising
  - Public Outreach
- **New Initiatives**
  - Budget Based Rates
  - Water Use Awareness (Water Smart)
  - Expand Landscape Programs



# Funding Opportunities

- **Federal**
  - President Obama pledge (\$183 M)
  - Drought Relief Bill for California (\$300 M)
- **State (\$687 M)**
  - \$549 M local and regional infrastructure/conservation
  - \$30M water efficiency & energy
  - \$14M groundwater management/contamination
- **Local MWD Board Action:**
  - RW retrofit funding (\$194/AF)
  - Increased conservation funding (+\$20M through FY14/15)
- **IEUA?**





# Local Project Objectives

Response to “Call for Projects” Feb 2014

- ✓ Increase Local Reliability
  - New yield/supplies
  - Provide safe potable water/groundwater cleanup
  - Decrease dependence on SWP
  - Interconnections
- ✓ Meet 20 x 2020 Goals
- ✓ Project Readiness
  - Permits, design, CEQA, etc.
- ✓ Grant Funding Available
  - RW conversions

# Local Project Summary\*

## Preliminary List

Project Category	AFY	Cost (\$M)
Groundwater Treatment/Cleanup	50,000 – 63,000	\$91.3
Recycled Water	8,000 – 12,000	\$31.1
Groundwater Recharge	2,100 - 3,800	\$1.8
Groundwater Production	7,650 - 9,650	\$12.3
Interconnections	3,700 - 4,200	\$2.5
Water Use Efficiency/Other	4,300 - 5,300	\$15.7
<b>TOTAL</b>	<b>75,750 – 97,950</b>	<b>\$154.7M</b>

\* Projects are combination of drought proofing and new supplies

# Regional Coordination for Local Projects

- Continue to refine projects
- Complete environmental documents
- Development of long-term projects
  - Coordinated with Planning Documents (IRP, RMPU, RWPS, WUEBP, LRFP)
- Identify funding sources
- Pursue grant funding

# Integrated Resources Plan

## IRP Provides:

- Long-Term Water Supply Strategy to meet 2040 Demands
- Enhances consistency with other planning documents
- Incorporates Water Use Efficiency Business Plan into the demand forecast

	Current	2040
Municipal Demand	232,400	315,000

# Integrated Resources Plan

- Program Categories
  - Maximizing regional supplies
  - Increased reliability
  - New imported water supplies



# Strategies to Maximize Regional Supplies

(Preliminary Overview)

Supply Option	Estimated Volume (AFY)	Description
<b>Recycled Water</b>		
IEUA RW System	70,000 – 80,000	Expand current RW system to maximize beneficial reuse of supplies.
WRCRWA and Rialto Intertie	4,500 - 8,000	Construct pipeline and pump station to intertie RW to IEUA's system
NRWS Recovery	4,000	Build a package brine treatment system to recover NRWS flows.
<b>Local Surface Water</b>		
Capture SW from Creeks	34,000	Capture SW flow from Cucamonga, Day, and San Sevaine Creeks.
Increase CDA recovery	2,000	Increase recovery by approximately 10%
<b>Water Use Efficiency</b>		
Conservation/Efficiency Programs	4,000 – 10,000	As identified by WUE update

# RECYCLED WATER

## Recycled Water Program Strategy (RWPS)

- Update '05 Recycled Water Implementation Plan

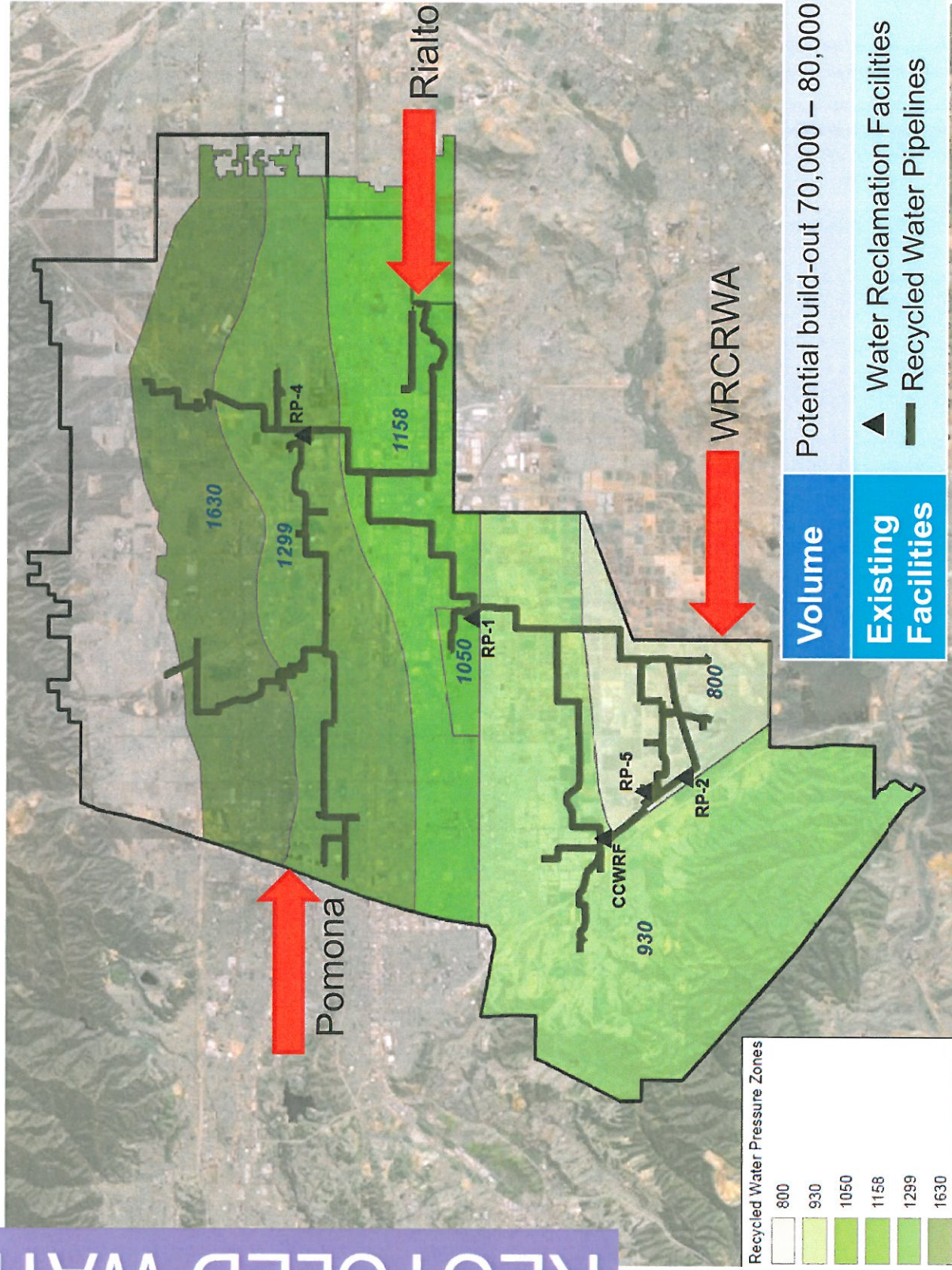
- Plan will include:
  - Supply and demand evaluations
  - Modeling
  - Capital improvement identification
  - Operational strategy
  - Implementation strategy

Recycled Water Demand Forecast (AFY)		
	FY 2012/13	Build-Out <sup>(1)</sup>
Direct Use	21,000	38,000
GWR	<u>10,500</u>	<u>34,000</u>
<b>Total Demand</b>	<b>31,500</b>	<b>72,000</b>

NOTES: (1) 2040, Excludes GWR sites identified through IRP and Prado obligation

# RECYCLED WATER

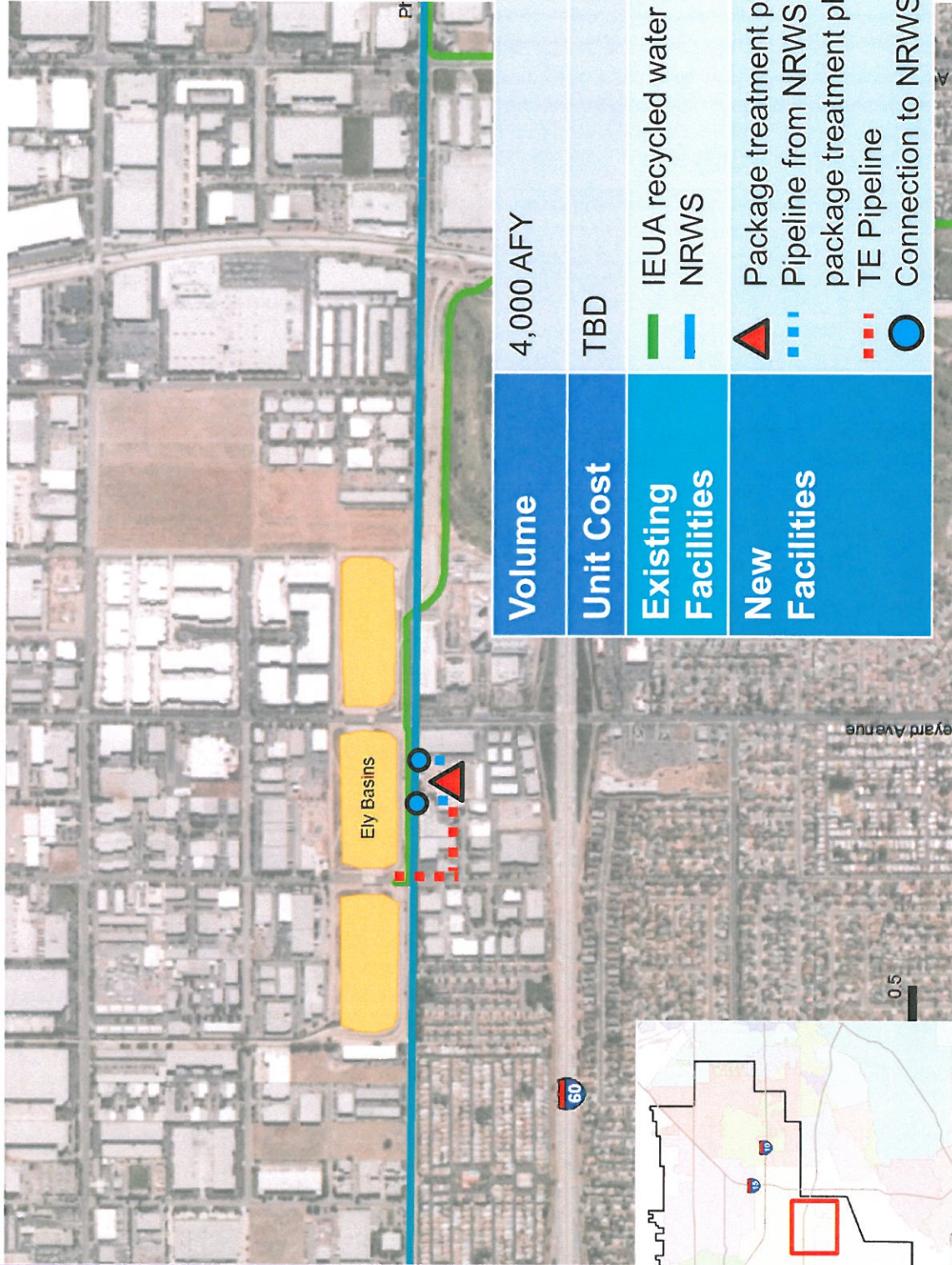
# Expand IEUA RW System



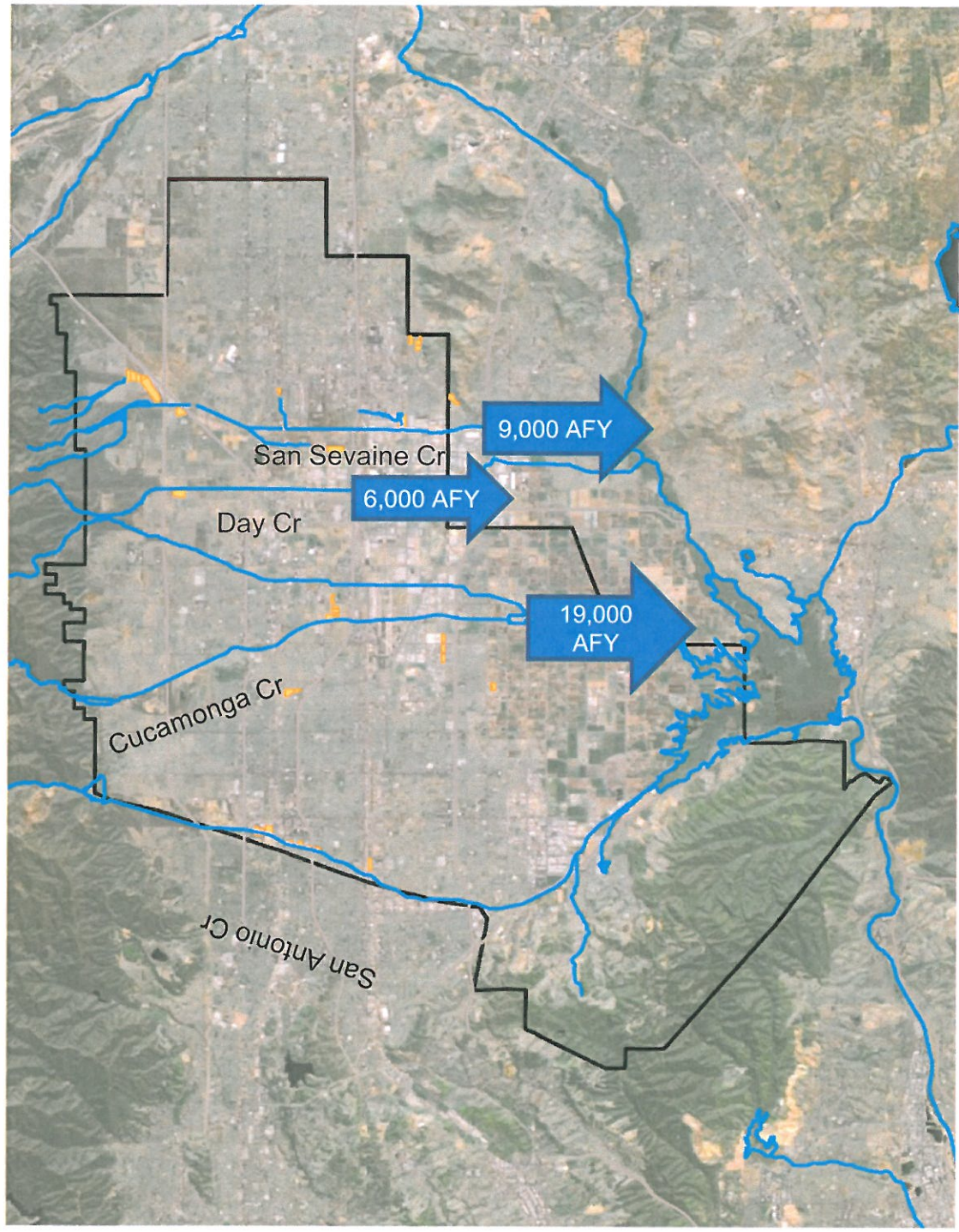


# RECYCLED WATER

# NRWS Brine Concentrate



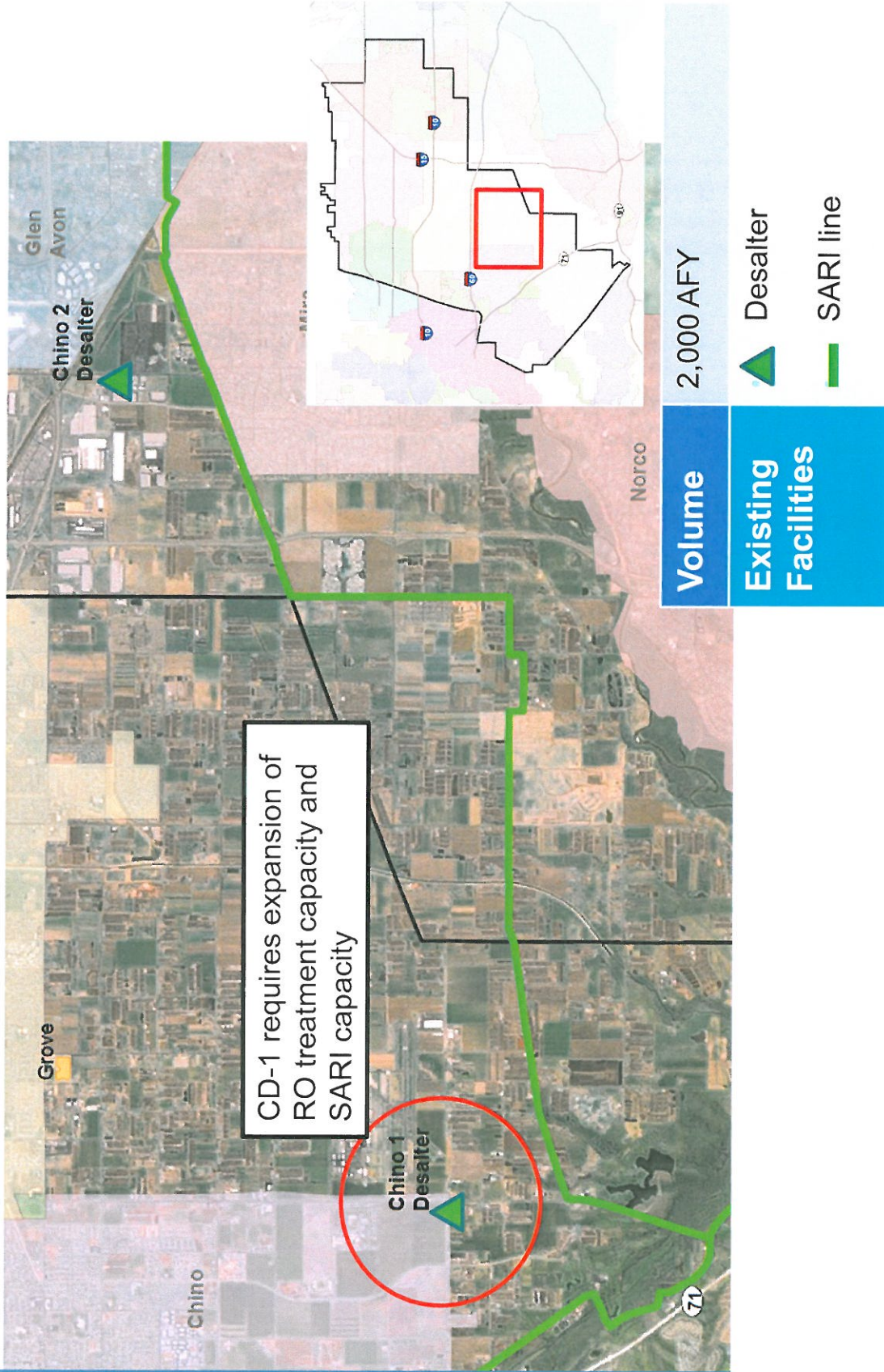
# Uncaptured SW from Creeks



\* Data from surface & storm flow modeling, and meant to illustrate a snapshot scenario of occurrence in 60 years

# LOCAL SURFACE WATER

# Increase CDA Recovery



# Strategies to Increase Reliability

(Preliminary Overview)

Supply Option	Est. Volume (AFY)	Facilities
Contamination Cleanup – Ontario Perchlorate & VOC Clean-up	11,500	Treatment facilities for VOC, perchlorate and potentially TDS removal
New Recharge Basin, ASR and Injection Well Sites	Varies	New recharge basins and ASR well sites to capture additional local flow, stormwater, recycled water and imported water
Semitropic Water Bank (Banking Water)	Varies	Banking opportunity for new water. Deliver via SWP-East to Semitropic and extract via SWP to MWD

# Strategies For New Imported Water Supplies

(Preliminary Overview)

Supply Option	Est. Volume (AFY)	Facilities
SBVMWD	Varies	Increase supply in SAR watershed
Six-Basin Exchange	Varies	Additional opportunities pending planning
Cadiz	5,000	Import GW from the Cadiz Valley to IEUA and wheel through MWD.
Ocean Desal West Basin MWD	5,000	Partnership - Buy into the West Basin MWD ocean desalination plant, and exchange for MWD imported water.
Non-SWP water	TBD	Purchase/lease non-SWP water

# Next Steps

- **Regional Project Funding Plan**
- **Regional Conservation Efforts**
  - IEUA support Gov. Brown's declaration
  - Promote conservation
  - Water Smart
- **April 10 Rate Workshop**
  - 10:00-3:00, CVWD

