



## AGENDA

### WORKSHOP OF THE BOARD OF DIRECTORS

WEDNESDAY, JANUARY 3, 2018  
10:00 A.M.

INLAND EMPIRE UTILITIES AGENCY\*  
AGENCY HEADQUARTERS  
BOARD ROOM  
6075 KIMBALL AVENUE  
CHINO, CALIFORNIA 91708

**CALL TO ORDER**  
**OF THE INLAND EMPIRE UTILITIES AGENCY BOARD OF DIRECTORS**  
**MEETING/WORKSHOP MEETING**

**FLAG SALUTE**

**PUBLIC COMMENT**

Members of the public may address the Board on any item that is within the jurisdiction of the Board; however, no action may be taken on any item not appearing on the agenda unless the action is otherwise authorized by Subdivision (b) of Section 54954.2 of the Government Code. Those persons wishing to address the Board on any matter, whether or not it appears on the agenda, are requested to complete and submit to the Board Secretary a "Request to Speak" form which is available on the table in the Board Room. Comments will be limited to three minutes per speaker. Thank you.

**ADDITIONS TO THE AGENDA**

In accordance with Section 54954.2 of the Government Code (Brown Act), additions to the agenda require two-thirds vote of the legislative body, or, if less than two-thirds of the members are present, a unanimous vote of those members present, that there is a need to take immediate action and that the need for action came to the attention of the local agency subsequent to the agenda being posted.

1. **WORKSHOP**

A. **CHINO BASIN CONJUNCTIVE USE ENVIRONMENTAL WATER STORAGE/EXCHANGE PROGRAM (POWERPOINT)**

B. **COLLECTION SYSTEMS WORKSHOP (POWERPOINT)**

2. **ADJOURN**

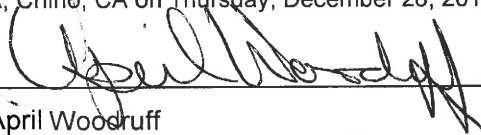
\*A Municipal Water District

In compliance with the Americans with Disabilities Act, if you need special assistance to participate in this meeting, please contact the Board Secretary (909) 993-1736, 48 hours prior to the scheduled meeting so that the Agency can make reasonable arrangements.

**Declaration of Posting**

Proofed by: sh

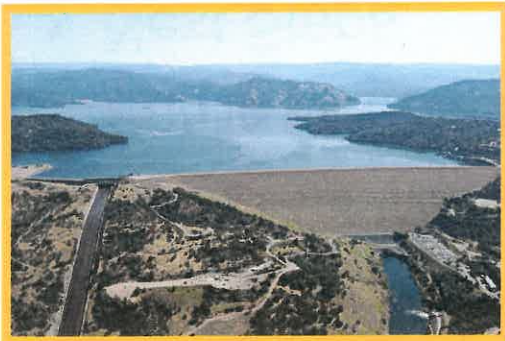
I, April Woodruff, Board Secretary of the Inland Empire Utilities Agency\*, A Municipal Water District, hereby certify that a copy of this agenda has been posted by 5:30 p.m. at the Agency's main office, 6075 Kimball Avenue, Building A, Chino, CA on Thursday, December 28, 2017.

  
\_\_\_\_\_  
April Woodruff

# WORKSHOP

# 1A

# Chino Basin Conjunctive Use Environmental Water Storage/Exchange Program



# Workshop Overview

- California Water Commission Presentation
- Public Outreach
- Next Steps

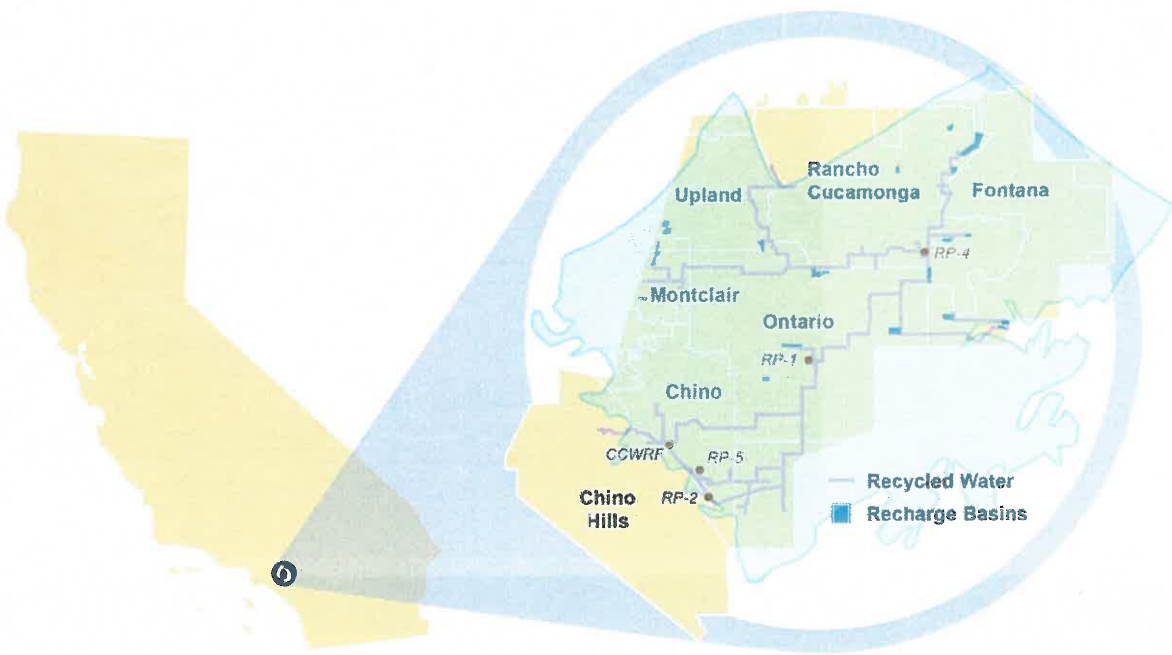


# Chino Basin Project Location

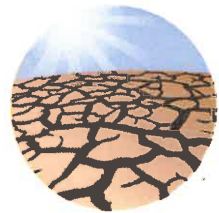
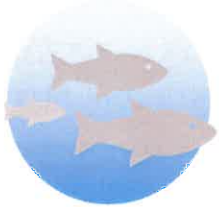
Chino Basin Project – 3 Ref: Letters of Support P 1-10, Project Description A3 P 10

## Project Partners & Supporters

- Chino Basin Desalter Authority
- Chino Basin Watermaster
- Jurupa Community Services District
- Metropolitan Water District of So. California
- Regional Water Quality Control Board
- Santa Ana Watershed Project Authority
- Southern California Water Committee
- The Nature Conservancy
- Western Municipal Water District



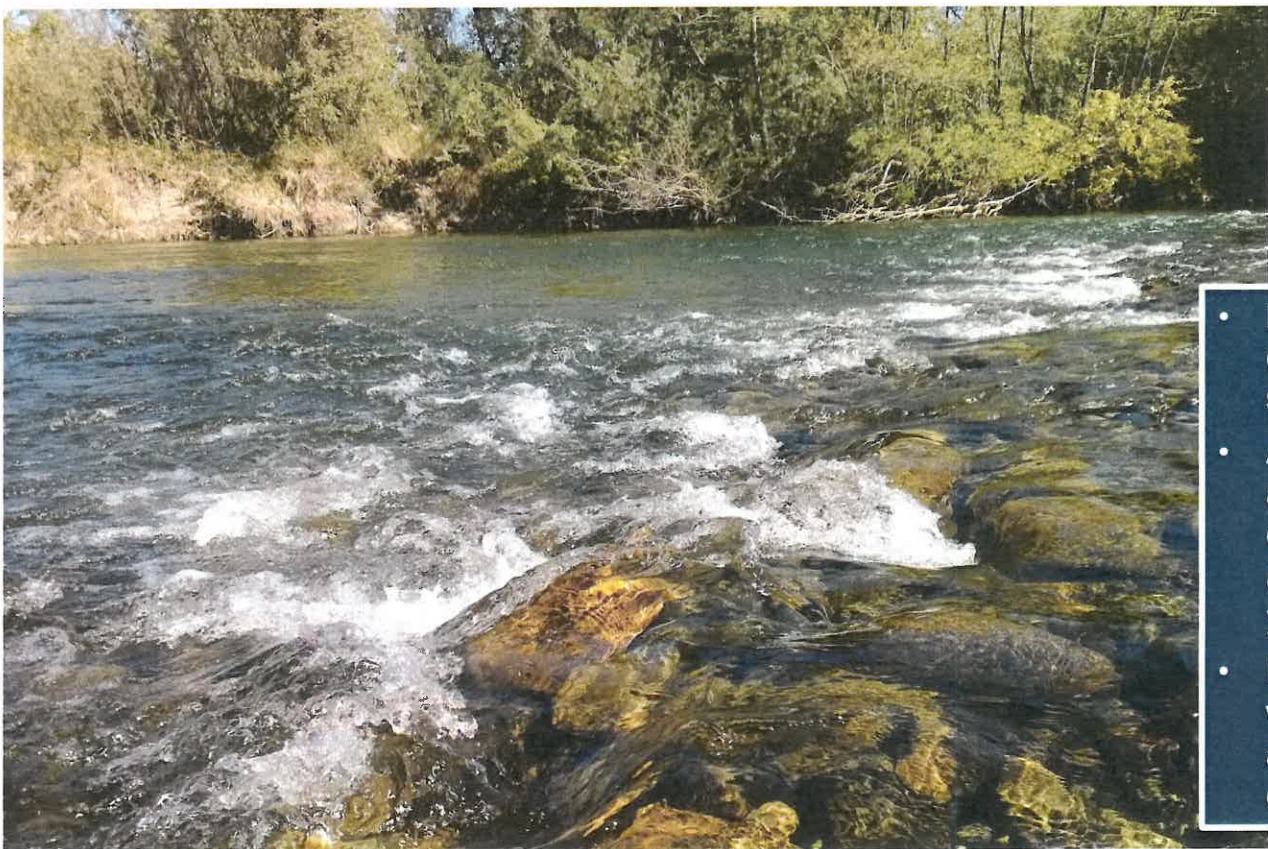
# 100% Guaranteed and Dedicated Delta Supply



- Provides ecological benefits north & south of Delta
- New source of conjunctively managed water
- Not dependent on climate

# New Source of Water, Not Dependent on the Delta

Chino Basin Project – 4 Ref: A1 Executive Summary P 2, 5, 8, 11, 13



- Reliable new dedicated water supply
- Available on-call anytime, including dry, critically dry and successive dry years
- Flexible delivery of water (i.e., annually or all at once)

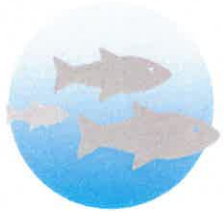


# Borrow Capacity from Existing Surplus Groundwater



- Utilize surplus Chino Basin storage
- Leverage existing infrastructure
- Project benefit as early as 2020

# Provide Ecological Benefits to Delta



- Dedicates blocks of water for ecological needs
- Lake Oroville discharges benefit the Feather River, fall and spring run Chinook salmon and aquatic habitat

Source: <http://images.fineartamerica.com/images-medium-large/jumping-chinook-salmon-tim-grams.jpg>

# Chino Basin Pre-Project Conditions

**State Water Project (SWP) Deliveries to Southern California**

- From Lake Oroville
- Across the Delta
- Pumped through the SWP California Aqueduct
- Delivered to partnering SWP contracting agencies

*Sacramento-San Joaquin Delta*

*Lake Oroville*

*Feather River*

*Inland Empire Utilities Agency*



15 TAF/year currently available for other uses

IEUA treats 54 TAF/year of recycled water



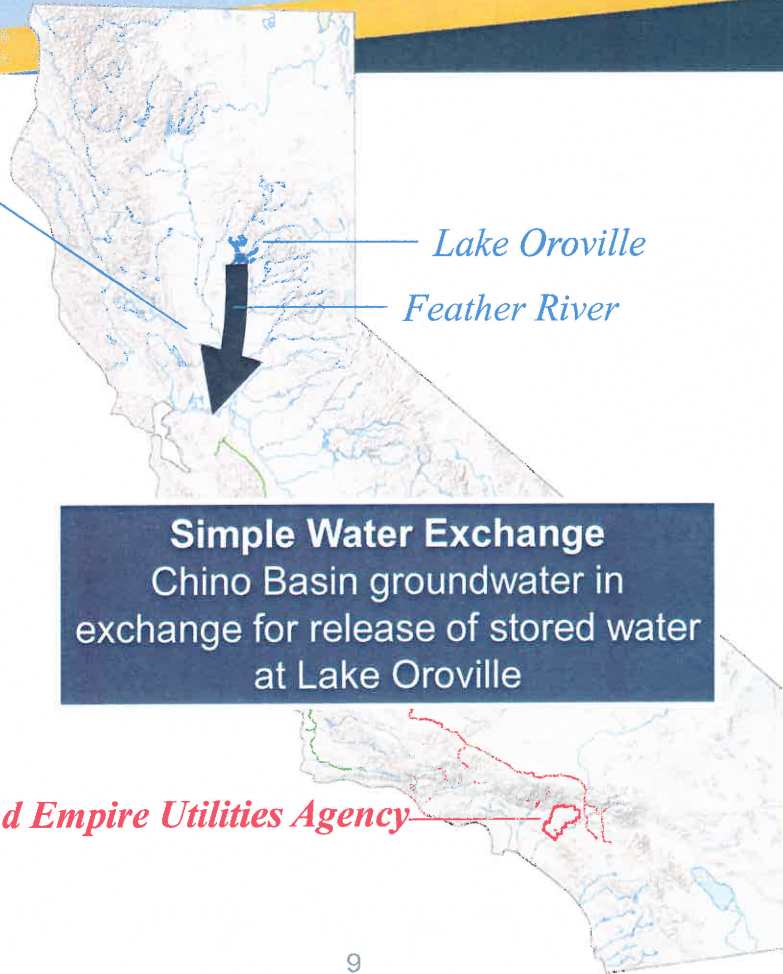
# Chino Basin Post-Project Conditions



## Ecosystem Benefits

- Reliable new dedicated water supply
- Available on-call anytime, including dry, critically dry and successive dry years
- Increased Delta outflow
- Borrowing capacity starting 2020

*Sacramento-San Joaquin Delta*



**Simple Water Exchange**  
Chino Basin groundwater in exchange for release of stored water at Lake Oroville

*Inland Empire Utilities Agency*



## Proposed Project

- Advanced water treatment of recycled water
- Stored as new water in the local basin – **flexible, secure and resilient**
- Continue supply for Santa Ana River ecosystem
- On-call from DFW, deliver water from storage for Delta ecosystem benefits

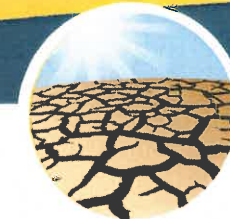
# Chino Basin Project Components



- Advanced water treatment facility
- Wells and treatment system
- Pipelines and interconnection
- Secure supply for Santa Ana River discharges
- Local agencies pay for operations and maintenance costs, while **100% supply is dedicated to Delta**



# Chino Basin Project Public Benefits



Source: <http://www.uppersarhcp.com/>



Source: <http://www.nmfs.noaa.gov/stories/2015/09/images/chinooksalmon02.jpg>

- Reliable **new water supply** in all types of years
- **Flexible delivery** of water (annually, all at once, etc.)
- **Dedicates blocks of water** for ecological needs
  - Lake Oroville discharges benefit the Feather River, **fall and spring run Chinook salmon** and aquatic habitat
- **Enhances local water quality** in the Chino Basin
- **Emergency response** supply for Southern California
  - Through agreements with State Water Project Contractor(s)

# Chino Basin Project Non-Public Benefits



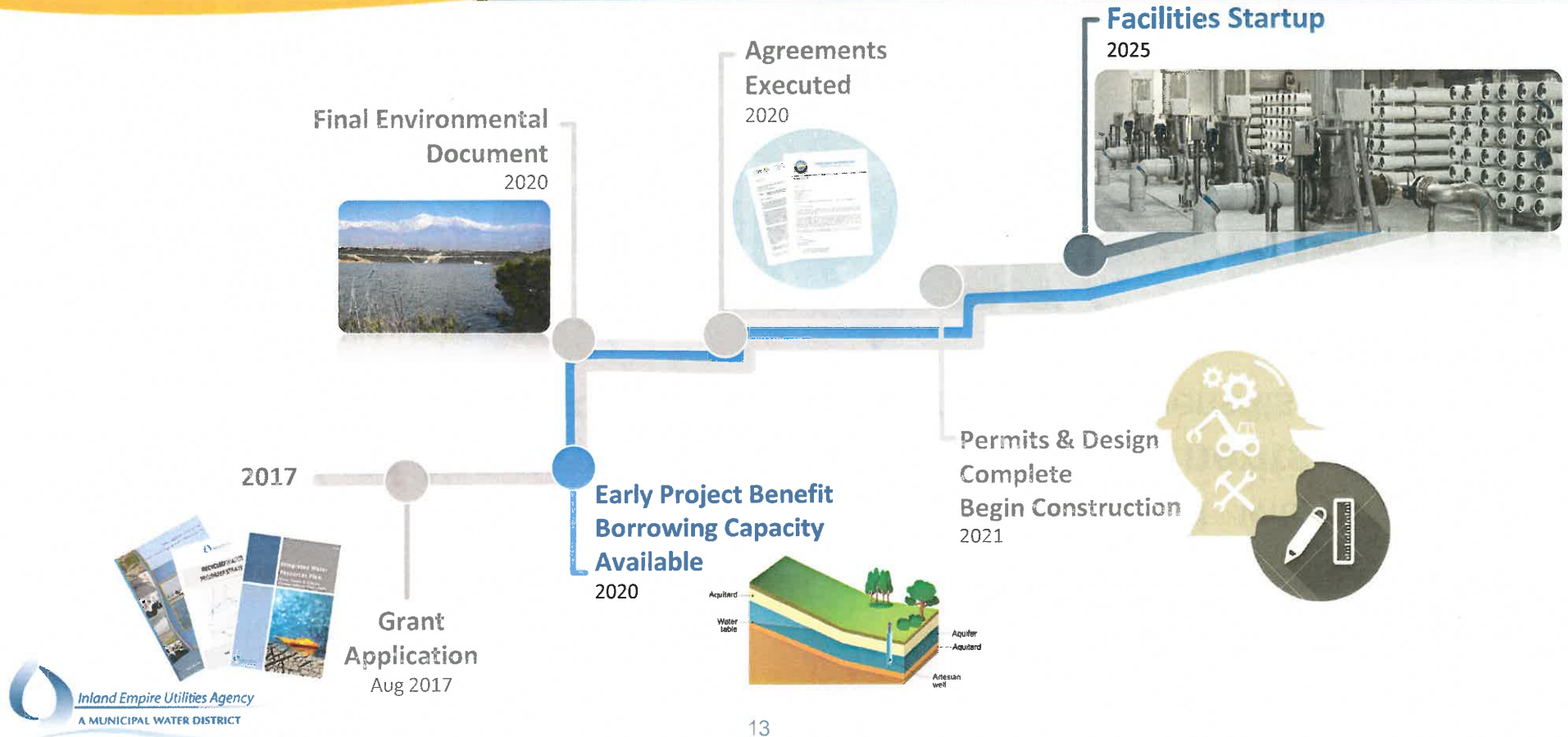
Source: <http://www.watereduction.org/sites/main/files/imagecache/medium/mainimages/aqueduct-east-branch-extension-4.jpg>



- Frees up capacity in California Aqueduct, improving **flexibility & resilience** of State Water Project operations
- Ensures **sustainable groundwater management** by increasing local groundwater recharge
- Addresses historical Chino Basin land subsidence
- Year-round flows provide **ecological benefits** for Santa Ana River

# Chino Basin Project Timeline & Milestones

Chino Basin Project - 12 Ref: A1 Feasibility Document P 14





# Chino Basin Project

Create a dedicated environmental water account with **100% of the water available for Delta Benefits** while providing regional and local water resiliency benefits



Ecosystem Support



Drought Resilient New Supply



Groundwater Sustainability



Water Use Maximization



Water Quality Enhancement



Regional Integration

# Public Outreach

- Diverse Application Support Letters
- Communication Plan
  - Local & Regional Project Partners
  - State Water Project Contractors
  - State Agencies
  - Environmental Community
  - State Legislative Representatives



# Next Steps

- **Proposition 1 Timeline**
  - Application Submission – August 2017
  - Project Presentations to CWC – December 2017
  - Project Ranking & Scoring Released by CWC – May 2018
  - CWC Releases Preliminary Project Funding Plan – June 2018
- **Support Letters – Complete by February 2018**
- **Project Agreements – Initiate mid-2018**

# WORKSHOP

# 1B

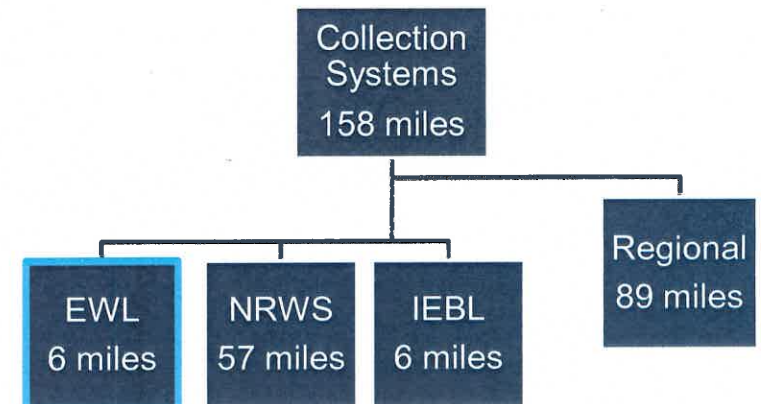
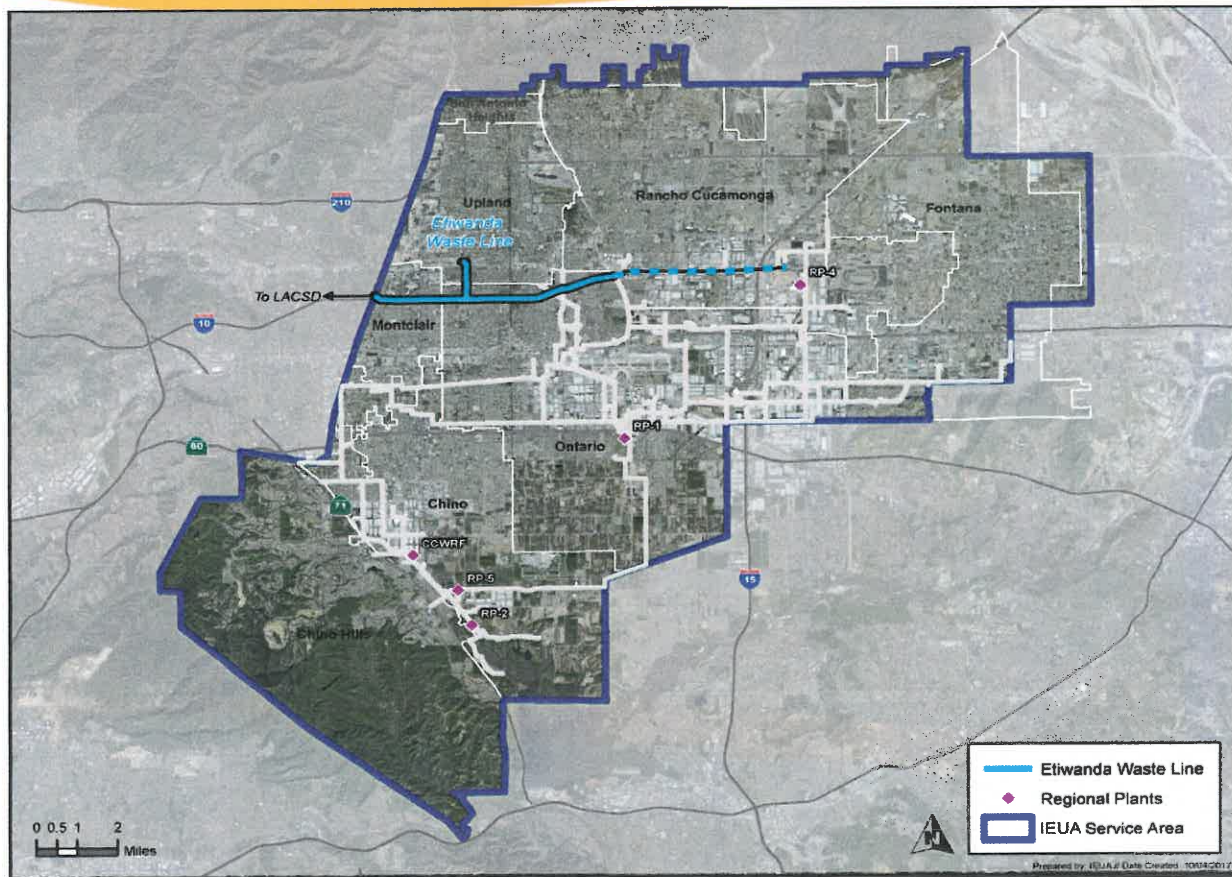
# Collection Systems Workshop



# Presentation Overview

- Brine Sewer System
- Regional Sewer System
- Sewer System Management Plan
- Collection System O&M
- Future Topics

# Etiwanda Waste Line System Overview

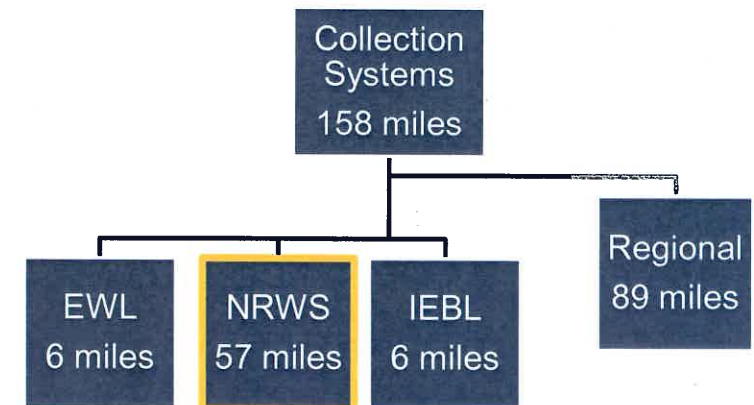
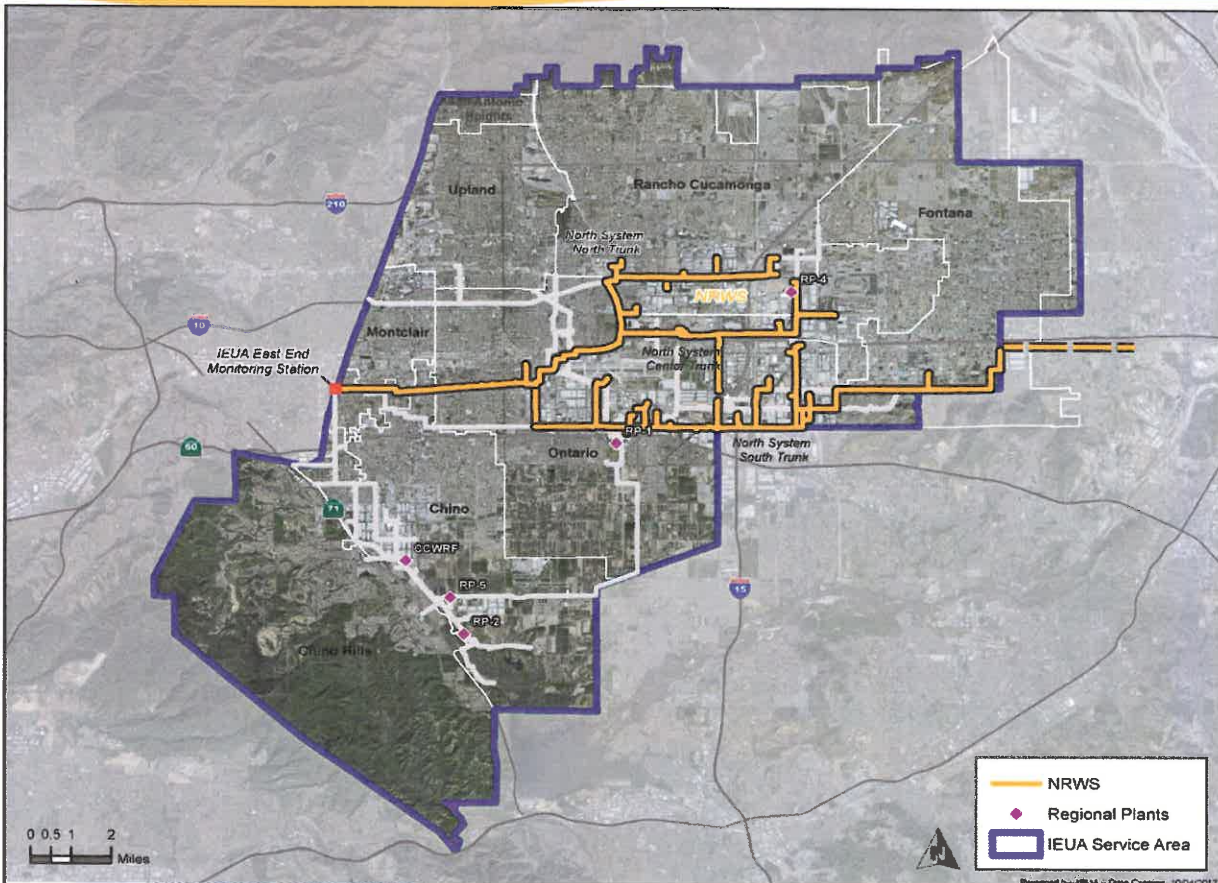


**EWL:** Etiwanda Waste Line

NRWS: Non-Reclaimable Wastewater System

IEBL: Inland Empire Brine Line

# Non-Reclaimable Wastewater System Overview



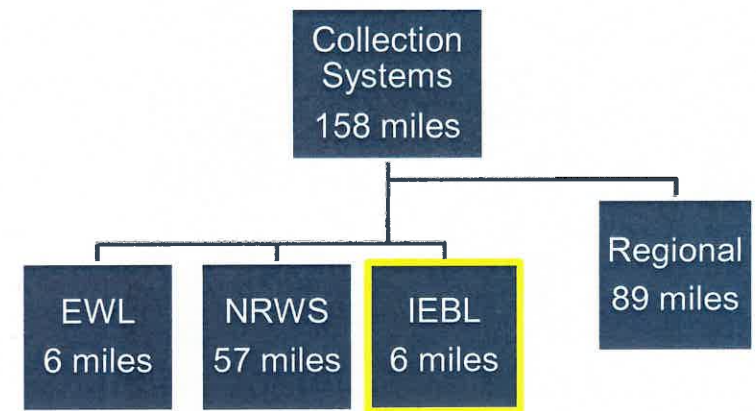
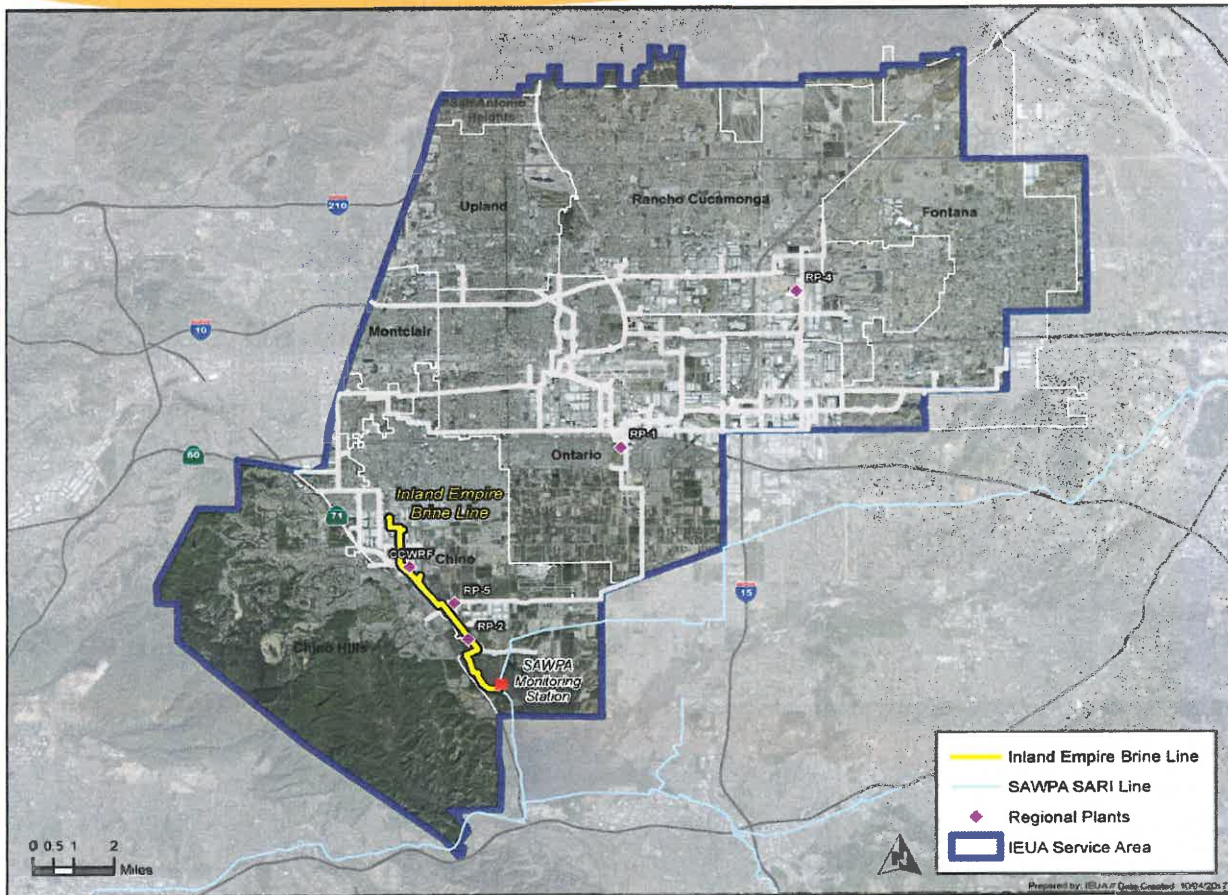
EWL: Etiwanda Wastewater Line

**NRWS: Non-Reclaimable Wastewater System**

IEBL: Inland Empire Brine Line



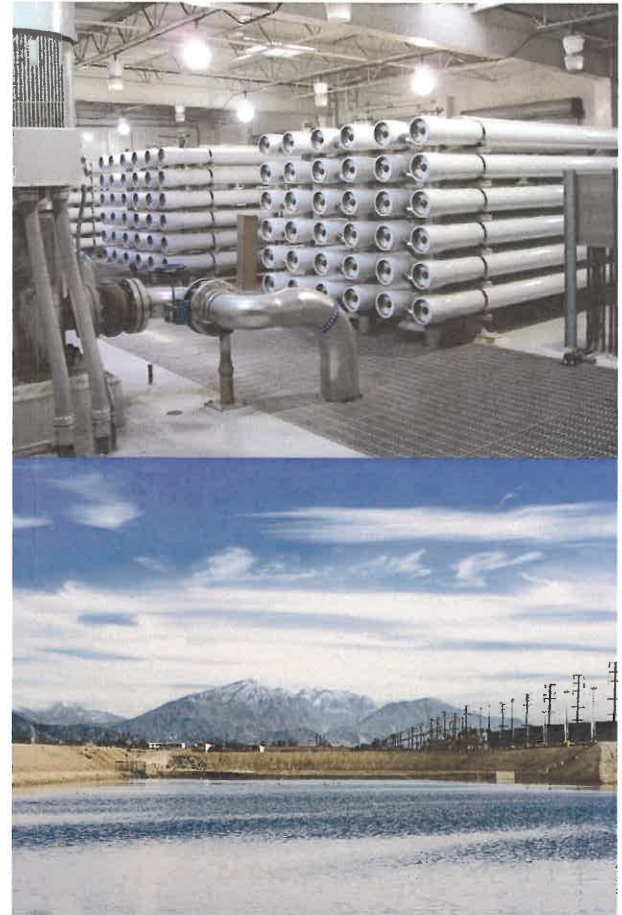
# Inland Empire Brine Line System Overview



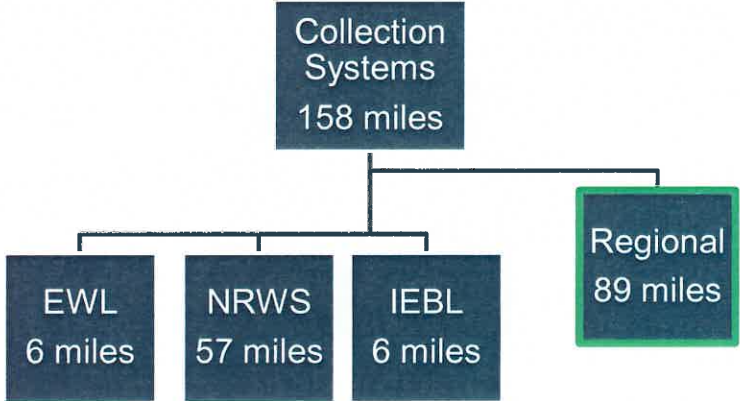
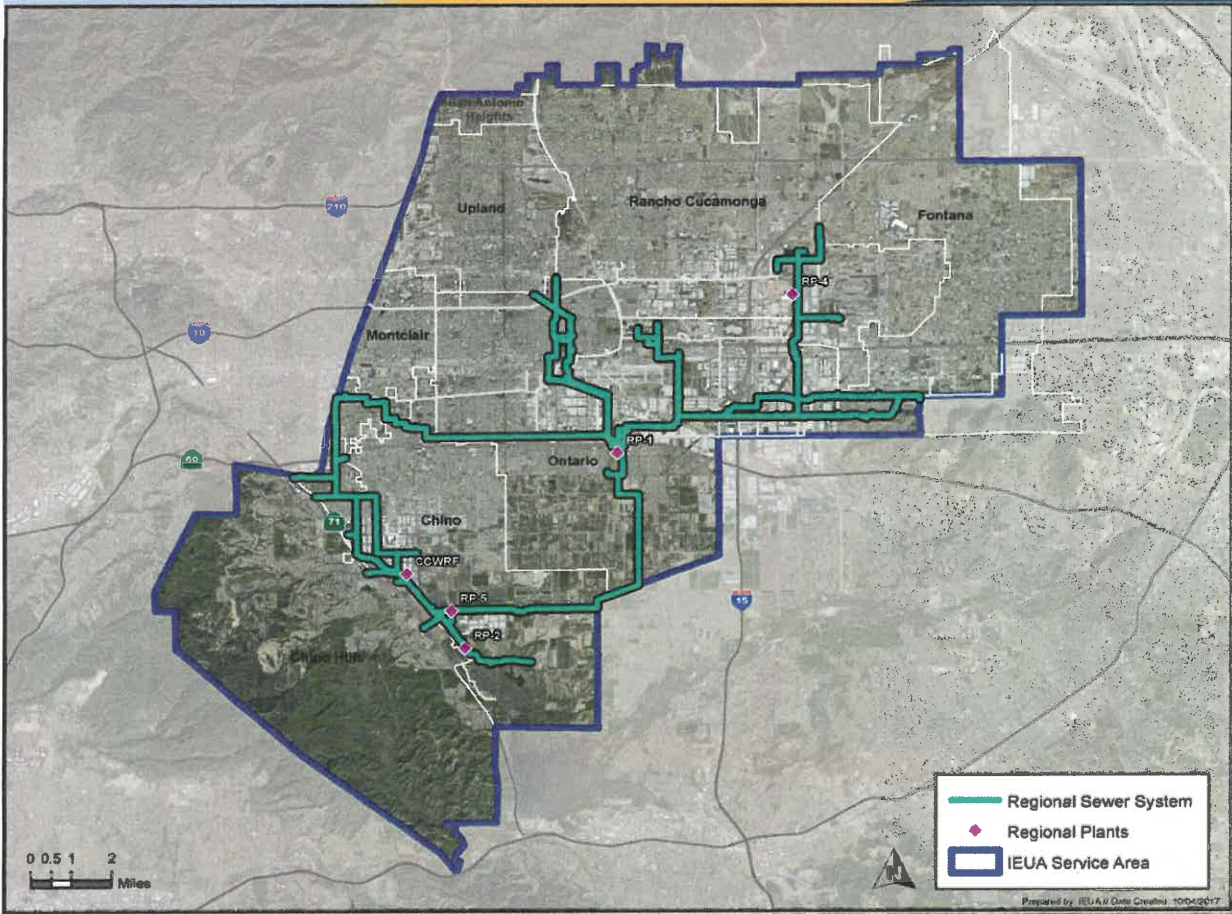
EWL: Etiwanda Wastewater Line  
 NRWS: Non-Reclaimable Wastewater System  
**IEBL: Inland Empire Brine Line**

# Benefit of Brine Sewer Systems

- Meets Basin Commitment for:
  - Maximum Benefit for Chino Basin
  - Basin Plan
- Allows continued use of Recycled Water within the Chino Basin
- Promotes economic development and job creation
- Permit Compliance for wastewater treatment plants
  - Agency wide average TDS 500 mg/L (limit: 550 mg/L)
  - Without Brine Lines, Regional System TDS > 995 mg/L
- Salt Export from the Chino Basin
  - 38,350 Tons Annually
  - annual savings of \$30M operational desalter cost

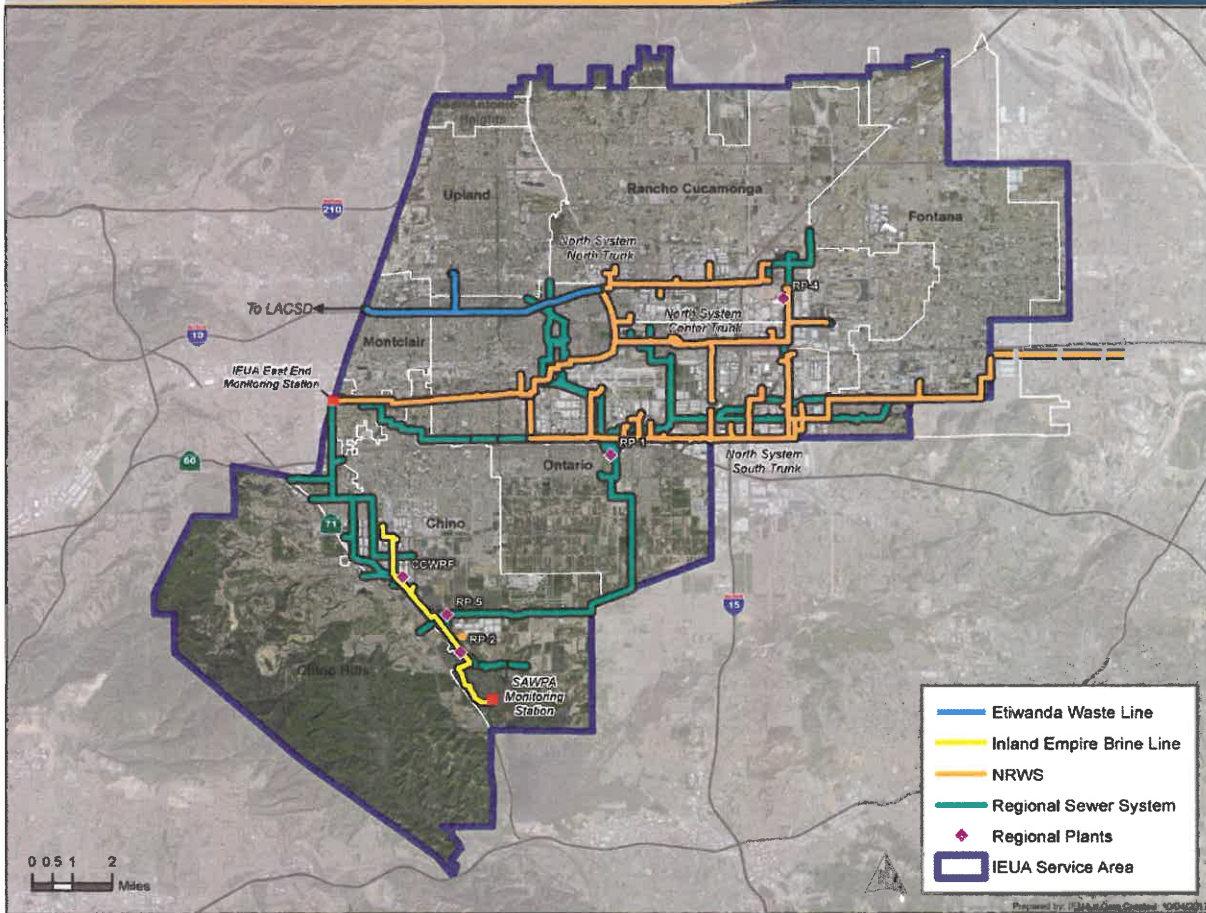


# Regional Sewer System Overview



EWL: Etiwanda Wastewater Line  
 NRWS: Non-Reclaimable Wastewater System  
 IEBL: Inland Empire Brine Line

# Collection System – Operations and Maintenance



Collection Systems  
158 miles  
2,478 manholes

EWL  
6 miles  
58 mh  
8-24"

NRWS  
57 miles  
820 mh  
4-42"

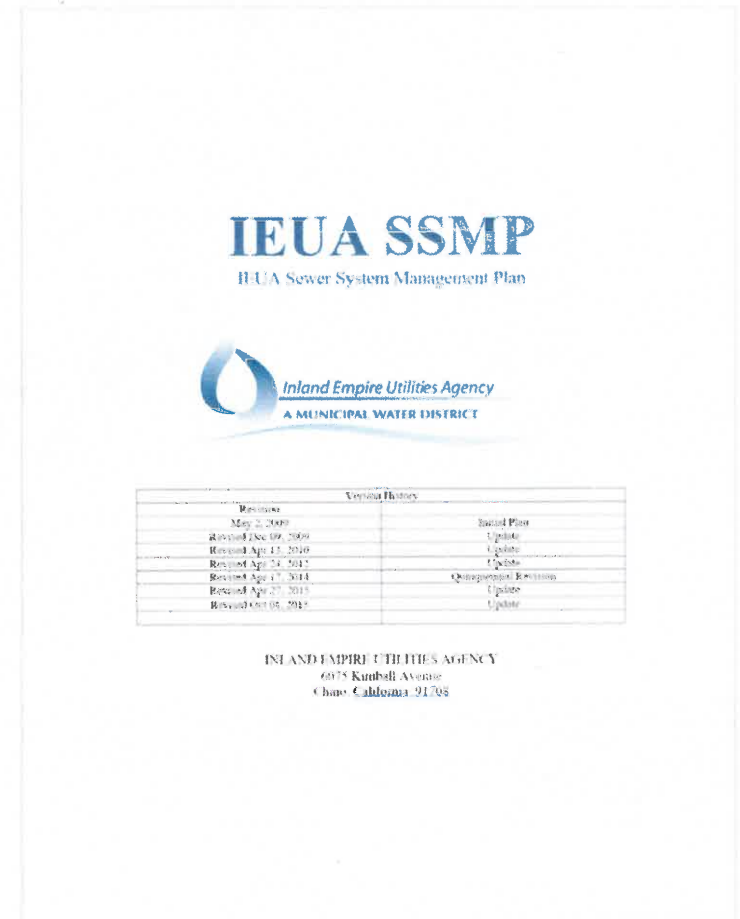
IEBL  
6 miles  
126 mh  
6-27"

Regional  
89 miles  
1,474 mh  
6-80"

# Sewer System Management Plan (SSMP)

## Operation and Maintenance Program

- System Map
- Preventative Maintenance
- Rehabilitation and Replacement



# Geographic Information System (GIS)

## Legend

### Sewer Manholes- Pending Rehab Repair

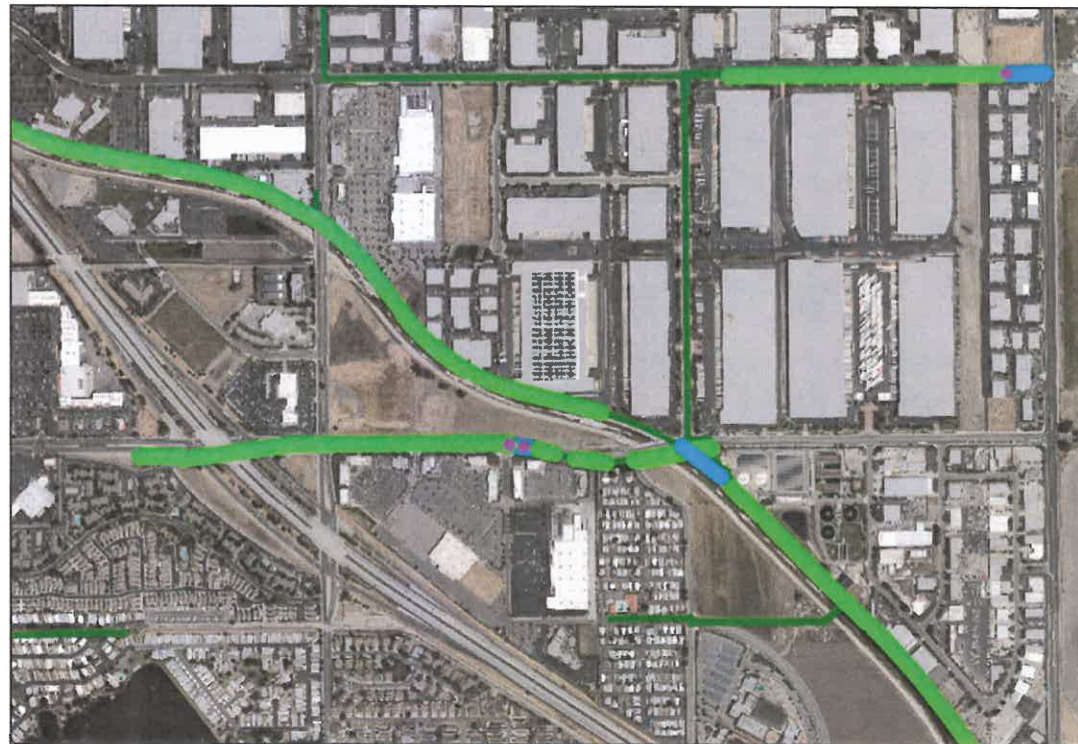


### Defect Category

- Cracks
- Joint Offset
- Lining
- Roots
- Sag

### Sewer Pipeline Summary

- 1 - Excellent (Re-inspect in 5+ years)
- 2 - Good (Re-inspect in 3 to 5 years)
- 3 - Moderate (Re-inspect in 3 years)
- 4 - Poor (Rehab/Repair or Cleaning in 1 to 2 years)
- 5 - Failing (Immediate Rehab/Repair or Cleaning)



# Collections System O&M Staff

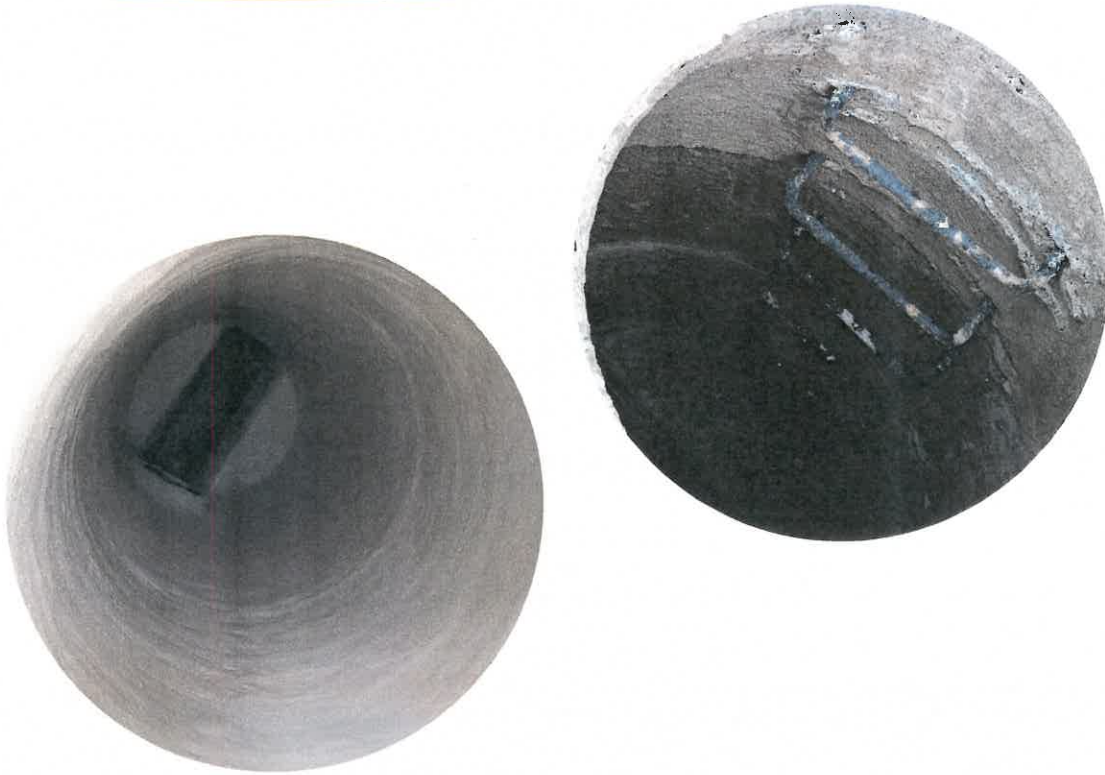


# Collections System O&M





# Rehabilitation and Replacement Projects - Engineering



## FY 17/18 Collections Projects

Project Title	Budget
Collection System Upgrades	\$500,000
NRW Pressure Line Assessment	\$75,000
NRW Manhole Upgrades	\$200,000
NRW Emergency O&M Projects	\$100,000

## Future Topics 2018

- IEBL Ordinance and Resolution
- Capacity Pool Agreement
- Sewer Fee Evaluation
- NRWS Ordinance
- Data Management Software
- O&M Manual & SSMP Re-certification